



SASKATCHEWAN URBAN MUNICIPALITIES



Saskatchewan Urban Municipalities Association (SUMA)

Municipal Leaders Roles and Responsibilities

SUMA

Established in 1905 as the *Union of Saskatchewan Municipalities*.

Formalized in 1967 through a provincial act.

An Act to incorporate the Saskatchewan Urban Municipalities Association

Being a Private Act

Chapter 101 of the Statutes of
Saskatchewan, 1967
(effective April 1, 1967)



SUMA's Mission:

The Saskatchewan Urban Municipalities Association (SUMA) is the provincial voice of urban municipal governments, representing cities, towns and villages. Through strength in unity, SUMA advocates, negotiates and initiates improvements in local, provincial and federal legislation, and delivers programs and services to members to enhance the quality of life in Saskatchewan.

Our Core Functions

Advocacy – We Represent Your Interests

- Voice of urban governments, representing interests to other orders of government.

Group Programs – We Help You Save Money

- Combine purchasing power of member governments for savings on goods and services, group benefits, and insurance.

Capacity Building – We Give You Access to Resources

- Provide information, training and tools to make you more effective.

Core Values

- We believe in protecting local autonomy.
- We consider the interests of all members prior to making decisions.
- We are accountable for our actions internally and externally.
- We are a membership-driven organization.
- We believe in providing value to our membership in the programs and services we provide.
- We take a fact-based approach to public policy.
- We respect each other, our membership, our partners, and other governments.

SUMA Represents

16 Cities

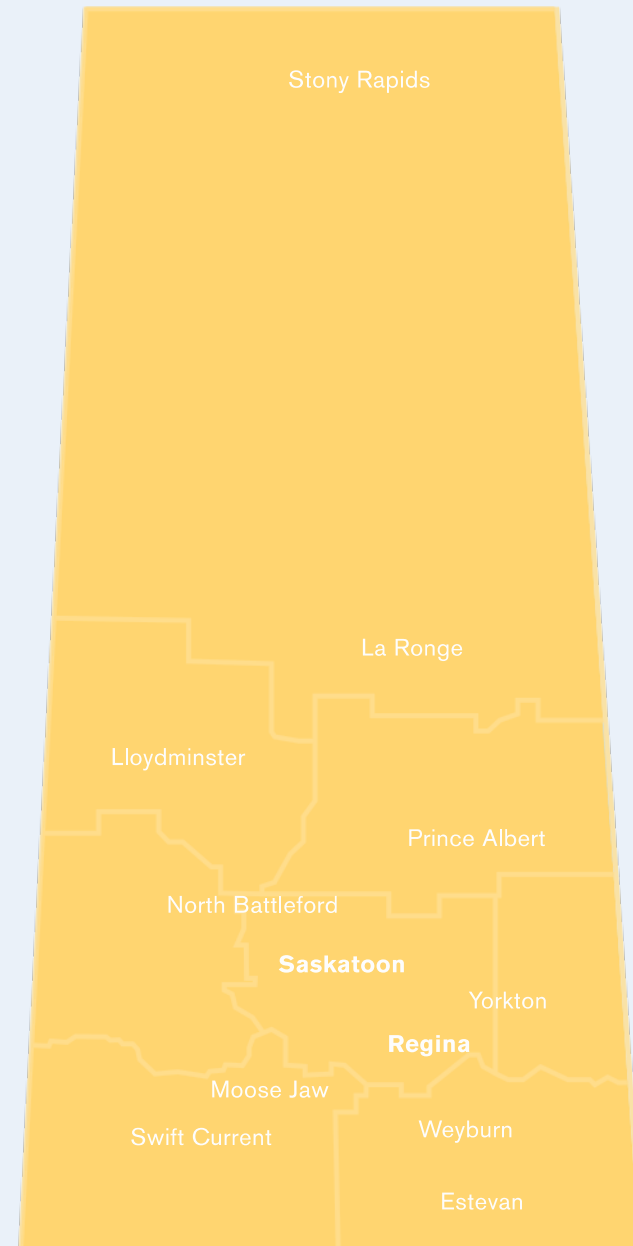
149 Towns

233 Villages

31 Resort Villages

14 Northern Municipalities

* Membership is voluntary



SUMA's Governance

Board of Directors

Executive Committee

President

Vice-President Cities

Vice-President Towns

Vice-President Villages,
Resort Villages and
Northern Municipalities

Saskatoon/Regina
Executive Member



City Directors

Director-City of Moose Jaw (1)

Director-City of Regina (2)

Director-City of Saskatoon (2)

Director-City of Prince Albert (1)

Regional Directors

Director-Northwest Region

Director-Northern Region

Director-Northeast Region

Director-East Central Region

Director-West Central Region

Director-Central Region

Director-Southwest Region

Director-Southeast Region



Administration

CEO

(Board and Administration)

Policy and Communications

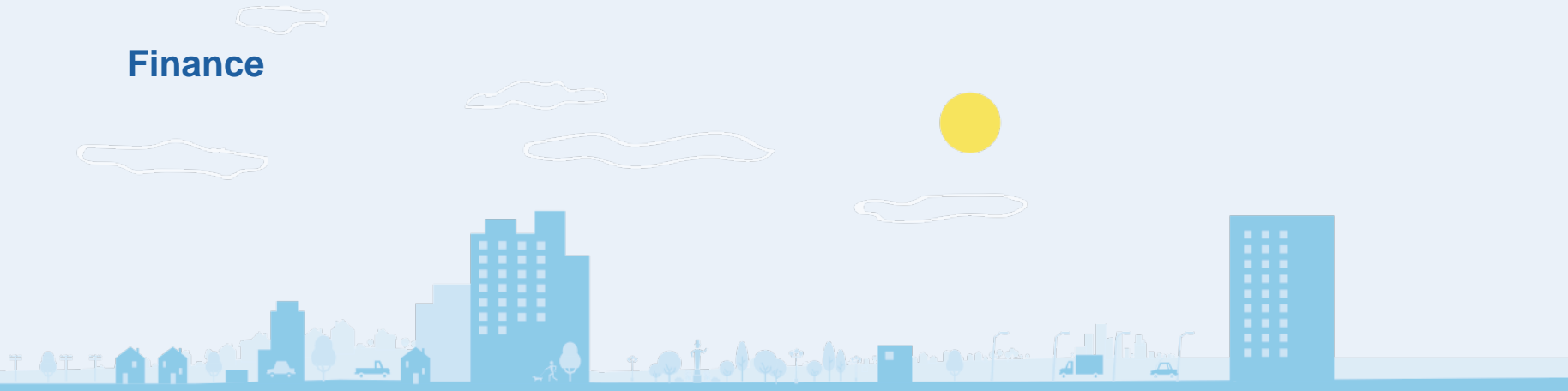
(Policy, Legal, and Communications)

16 full time staff
1 contract position

Corporate Programs and Member Services

(Group Benefits, Municipal Procurement,
Program Marketing and Events)

Finance



Policy and Communications

- **Our Role:**

- to Promote, Protect and Defend the interests of our members
- to make SUMA the leading voice on urban issues in Saskatchewan

- **Our Principles:**

- elected officials determine the direction
- interests of members drive our work
- work is relationship based, long term, pragmatic, principled and fact based
- government to government, elected to elected

- **Areas of Work:**

- **Research** - turning problems in solutions
- **Policy Development** - turning solutions into actions
- **Advocacy** - turning actions into results
- **Communication** - telling your story
- **Member Engagement**

Corporate Programs and Member Services

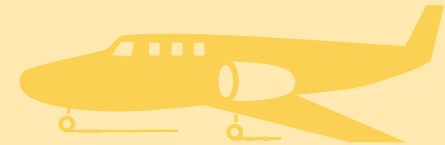
- **Events** - annual convention and tradeshow, regional meetings, workshops, and webinars
- **Our programs help members save money:**
 - **SUMAdvantage** – leverages the collective purchasing power of member municipalities, helping you save time and money. The program is based on the simple premises that buying in bulk is cheaper than paying retail.
 - **Group Benefits** – benefit offerings include: life insurance; accidental death, disease, and dismemberment; short- and long term disability; extended health care; dental care; vision care; employee and family assistance program; and healthcare spending account.
 - **SUMAssure** – subscriber owned, subscriber governed insurance program designed for Saskatchewan urban municipalities. The core coverages include: general liability; municipal errors and omissions; property; boiler and machinery; crime; and legal advice and expenses.



How can you access SUMA ?



- Your Regional Director
- Contact our staff directly
- Attend the annual convention
- Attend regional meetings
- Visit our website (www.suma.org)
- Subscribe to our email lists and publications (Urban Update and Urban Voice)
- Twitter @SUMA_Amplify
- Facebook – Saskatchewan Urban Municipalities Association



THANK YOU

